



AVALON
AT BALDIVIS

Dream Haven

3 Bed 2 Bathroom Home with 190mt² in total

Inclusions:

- Choice of 3 Stylish Elevations
- Floor Tiling to entry, Family, Meals, Passages, Laundry & WC
- Carpets to Bedrooms and Theatre
- Venetian Blinds
- Westinghouse 900mm Stainless Steel Cooktop, Oven & Rangehood
- Pivot Doors to both Showers in Toughened Glass
- Dishwasher Recess including cold water tap and Power Point
- Doors to Robes in Bed 2 & 3
- Site Works Allowance

Total Price \$318,980

Optional Turn Key Inclusions

- Full Internal Wall Painting
- Beautiful Light Fittings
- Rear Landscaping Allowance
- Clothesline
- Letter Box
- Paved crossover

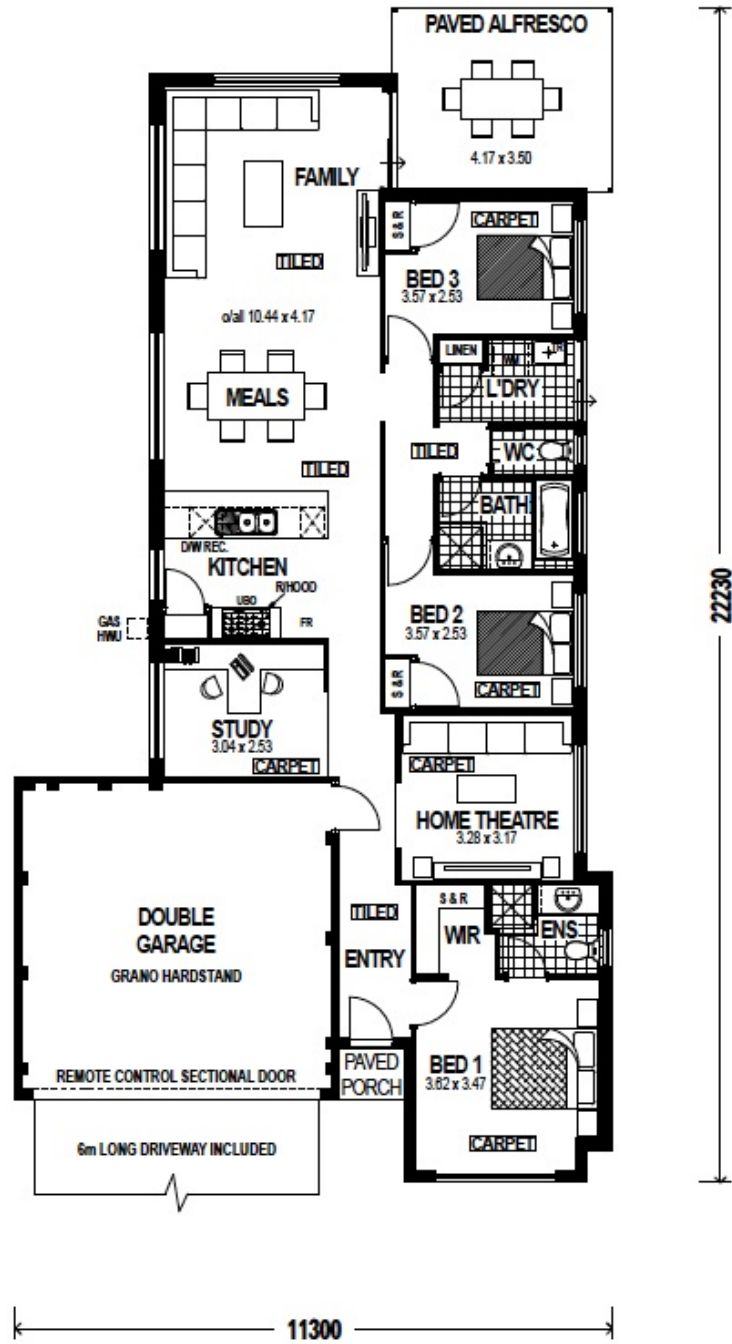
Call Rob Piromalli on 0403 262 500

SALES OFFICE OPEN: Sat and Sun 1-5pm, Mon and Wed 2-5pm. Located on Baldivis Road

Another quality estate managed by  **terrano**vis
.com.au

Dream Haven

Traditional



HOUSE	138.77m ²
PORCH	1.19m ²
GARAGE	36.39m ²
ALFRESCO	14.07m ²
TOTAL AREA	190.42m ²

© COPYRIGHT TO DREAMSTART HOMES



ACN 055 245 308
4 Gould Street, Osborne Park
 P.O. Box 1522
 Osborne Park W.A. 6917
PH (08) 6314 3444
 FAX (08) 6314 3499
www.dreamstarhomes.com.au